

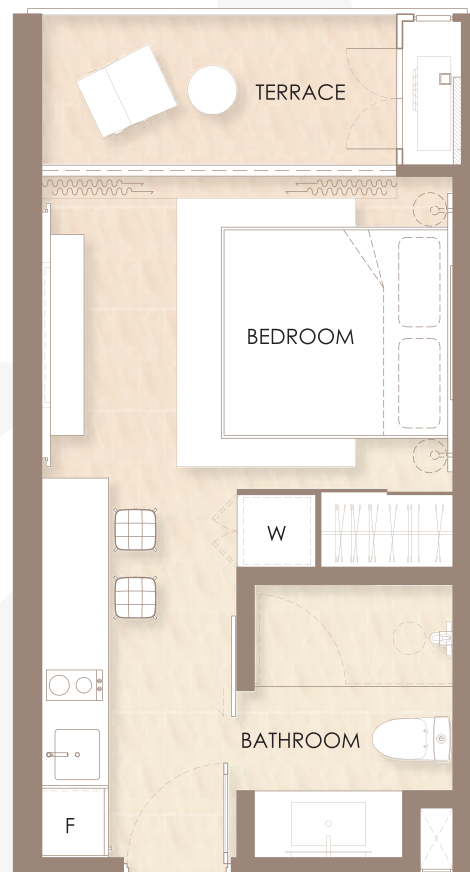
UNIT PLAN

Building A

STUDIO - S1

30.00 SQ.M.

Siamese Bangtao, Phuket



*Under development

SEE LAGAL DISCLAIMERS ON FINAL PAGE*

UNIT PLAN

Building A

1 BEDROOM - B1

45.25 SQ.M.

Siamese Bangtao, Phuket



*Under development

SEE LAGAL DISCLAIMERS ON FINAL PAGE*

UNIT PLAN

Building A

1 BEDROOM - B1.1

54.50 SQ.M.

Siamese Bangtao, Phuket



*Under development

SEE LAGAL DISCLAIMERS ON FINAL PAGE*

UNIT PLAN

Building A

1 BEDROOM PLUS (MULTI-FUNCTIONAL ROOM)- B1.2

55.64 SQ.M.

Siamese Bangtao, Phuket



*Under development

SEE LAGAL DISCLAIMERS ON FINAL PAGE*

UNIT PLAN

Building A

2 BEDROOM - B2.1

83.50 SQ.M.

Siamese Bangtao, Phuket



*Under development

SEE LAGAL DISCLAIMERS ON FINAL PAGE*

UNIT PLAN

Building A

2 BEDROOM - B2.2

85.75 SQ.M.

Siamese Bangtao, Phuket



*Under development

SEE LAGAL DISCLAIMERS ON FINAL PAGE*

UNIT PLAN

Building A

2 BEDROOM - B2.3A

79.50 SQ.M.

Siamese Bangtao, Phuket



*Under development

SEE LAGAL DISCLAIMERS ON FINAL PAGE*

UNIT PLAN

Building A

2 BEDROOM - B2.3B

79.50 SQ.M.

Siamese Bangtao, Phuket



*Under development

SEE LAGAL DISCLAIMERS ON FINAL PAGE*

UNIT PLAN

Building A

2 BEDROOM - B2.4

90.75 SQ.M.

Siamese Bangtao, Phuket



*Under development

SEE LAGAL DISCLAIMERS ON FINAL PAGE*

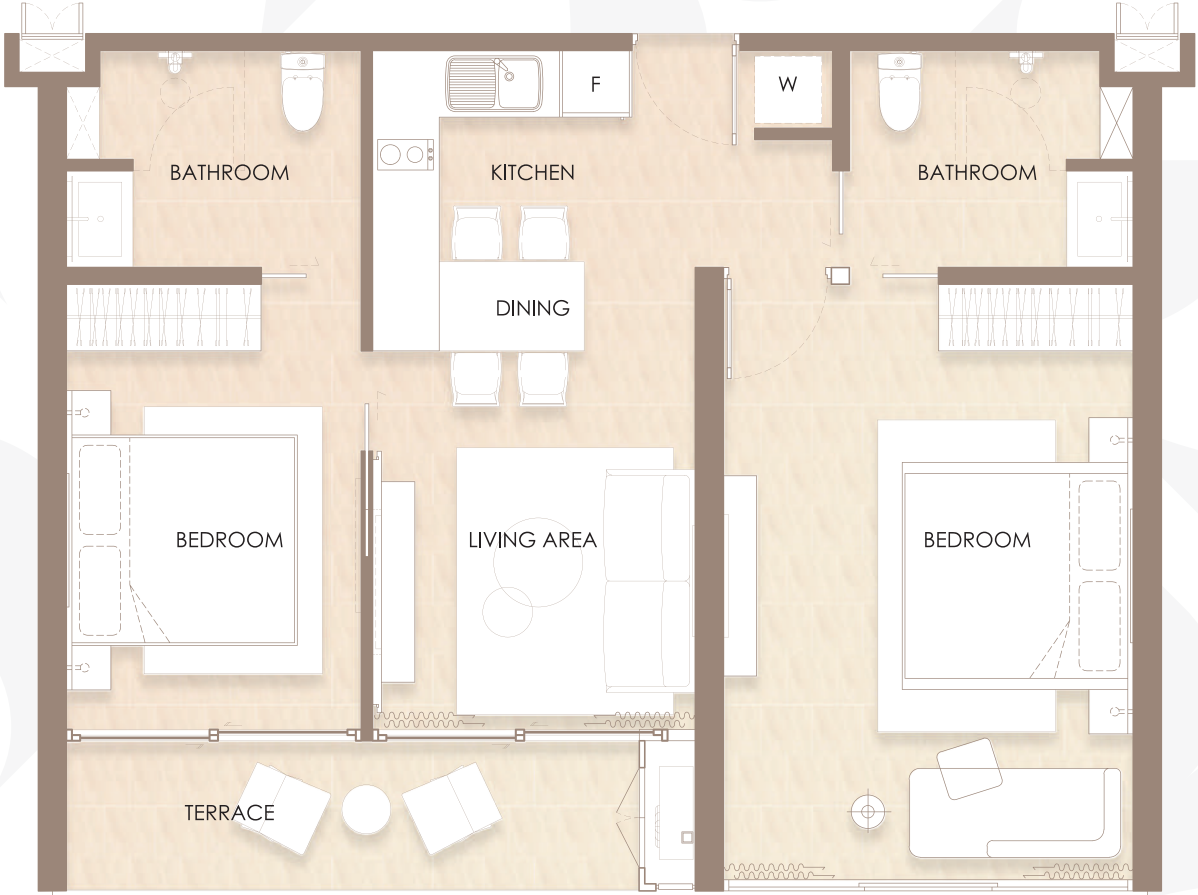
UNIT PLAN

Building A

2 BEDROOM - B2.5

75.00 SQ.M.

Siamese Bangtao, Phuket



*Under development

SEE LAGAL DISCLAIMERS ON FINAL PAGE*

UNIT PLAN

Building A

2 BEDROOM - B2.5-GF

61.00 SQ.M.

Siamese Bangtao, Phuket



*Under development

SEE LAGAL DISCLAIMERS ON FINAL PAGE*

UNIT PLAN

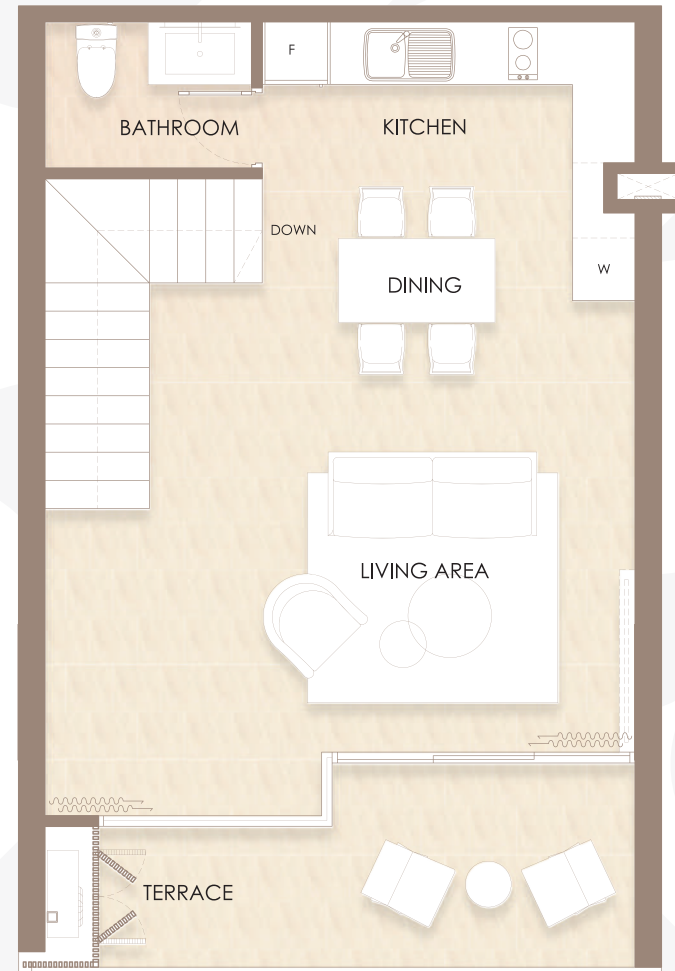
Building B - Lower Unit

DUPLEX - D1
92.00 SQ.M.

Siamese Bangtao, Phuket



Lower Floor



Upper Floor

UNIT PLAN

Building B - Lower Unit

DUPLEX - D1.1

104.25 SQ.M.

Siamese Bangtao, Phuket



Lower Floor



Upper Floor

*Under development

SEE LAGAL DISCLAIMERS ON FINAL PAGE*

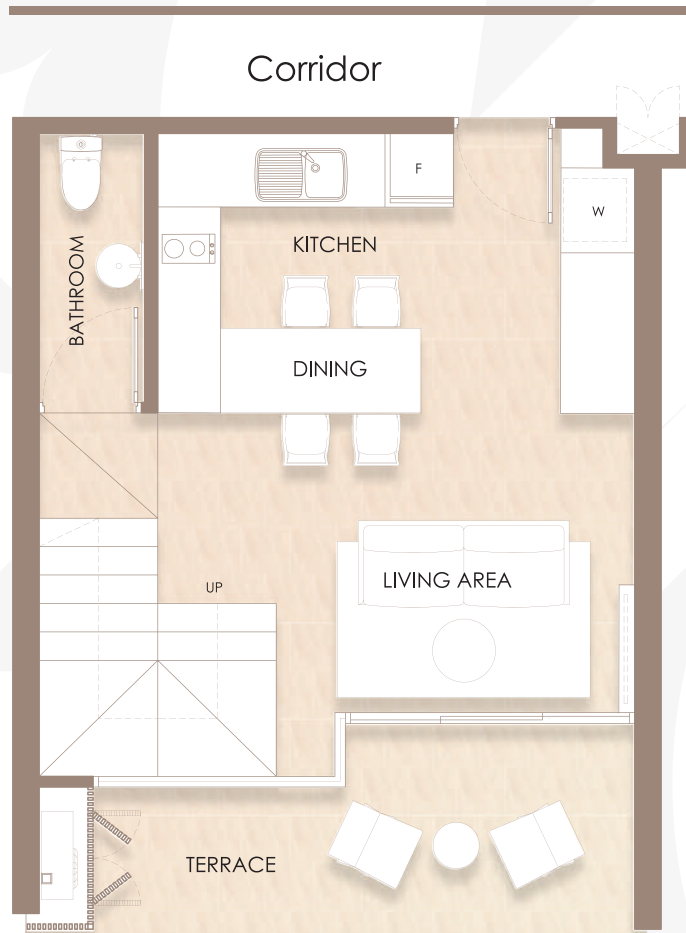
UNIT PLAN

Building B - Upper Unit

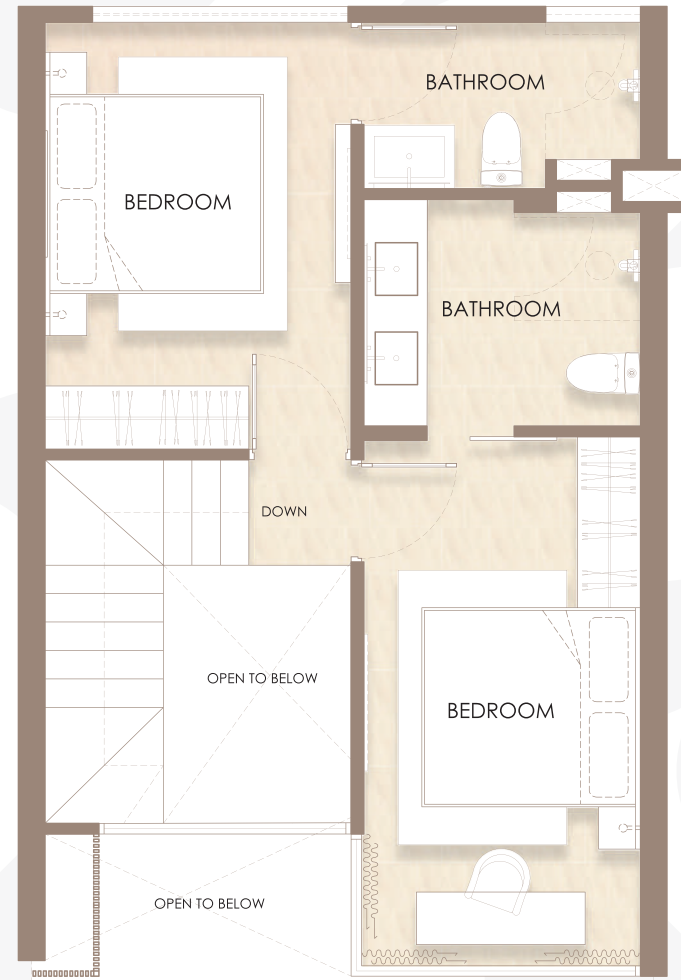
DUPLEX - D2

97.00 SQ.M.

Siamese Bangtao, Phuket



Lower Floor



Upper Floor

UNIT PLAN

Building B - Upper Unit

DUPLEX - D2.1

84.75 SQ.M.

Siamese Bangtao, Phuket



Lower Floor



Upper Floor

*Under development

SEE LAGAL DISCLAIMERS ON FINAL PAGE*



Siamese Bangtao

Khoktanode Soi 3, Choeng Thale, Thalang District, Phuket 83110

+66 628 789 224

+66 835 293 388

Project Name Siamese Bangtao **Asking for government permission by the name** Siamese Bantao **Project owner** Siamese Stone Developments Co., Ltd. **Company Registration Number** 0105565203529 **Office address** Charter Square, Floor 30, Unit 30-02, North Sathorn Road, Silom Sub-district, Bang Rak District, Bangkok 10500 **Registered capital** 5,000,000.00 THB **Authorized directors** 1. Mr.Dhanesh Deepak Sabnani 2. Mr.Richard Charles Bell 3. Mr. Puffipong Chatasuchart 4. Mr.Panitan Tepnikorn 5. Mr.Wanchai Amornsuwan **Project location** Soi Khok Tonode 3, Tambon Cheong Thale, Amphoe Thalang, Phuket **Area of the project** 3-1-31 **Land title deed no.** 19406 **Encumbrance** process of applying for a loan with a financial institution **Type of building** Condominium **Construction Proceeding Date** Q2 2025 **Expected Completion Date** Q2 2027 * **Remarks: Information and details of the Project may be changed without prior notice**

DISCLAIMER All of the contents in this document, including but not limited to any pricing, pictures, artists' impressions, layouts, specifications, plans and/or dimensions (henceforth known collectively as the information') is for illustrative purposes only and should not be construed as, or relied upon as, being a final offer for sale or a solicitation of any offer to purchase a SIAMESE STONE Developments property, or any other product or service said information may represent. The developer, SIAMESE STONE Developments, reserves the right to change, alter and/or modify the information in any way and at any time without notice. SIAMESE STONE Developments, including any of its affiliates, employees, officers and/or agents shall not be responsible for any direct or indirect loss, damage, harm and/or prejudice whatsoever, caused to whichever party, as a result of any reliance being placed by any person(s) on any of the information. The purchase of a SIAMESE STONE Developments property will be subject to the detailed terms, conditions and provisions of a deed of sale to be provided by SIAMESE STONE Developments.